



HERPETIC ENCEPHALITIS OF THE NEWBORN : CLINICAL AND PARACLINICAL ASPECTS

Bondarenco Ana¹, Hadjiu Svetlana^{1,2}

¹State University of Medicine and Pharmacy “Nicolae Testemițanu” Chișinău, Republic of Moldova,

²Department of Pediatrics, Clinic of Child’s neurology, ³ IMSP Institutul Mamei și a Copilului, Chișinău, Republic of Moldova

Introduction

Encephalitis caused by VHS1 is a disease met commonly among newborns, it’s acute forms affecting not only the current state of an infant, but also the further development: 1 out of 64 000 newborns/year. The initial stages of diagnosis are difficult, and the first symptoms of the disease appear in the first 4 weeks.

Keywords

Herpetic encephalitis, herpes simplex virus, newborn

Purpose:

To discuss and find the main particularities of this disease in order to enhance and facilitate it’s diagnosis.

Material and methods

18 newborns with HE symptoms. 10 of them were confirmed. Investigation methods: general, neurological examination; histological, biochemical investigation of cerebrospinal fluid, specific antibodies study (ELISA), electroencephalography; imagistic examination.

Results

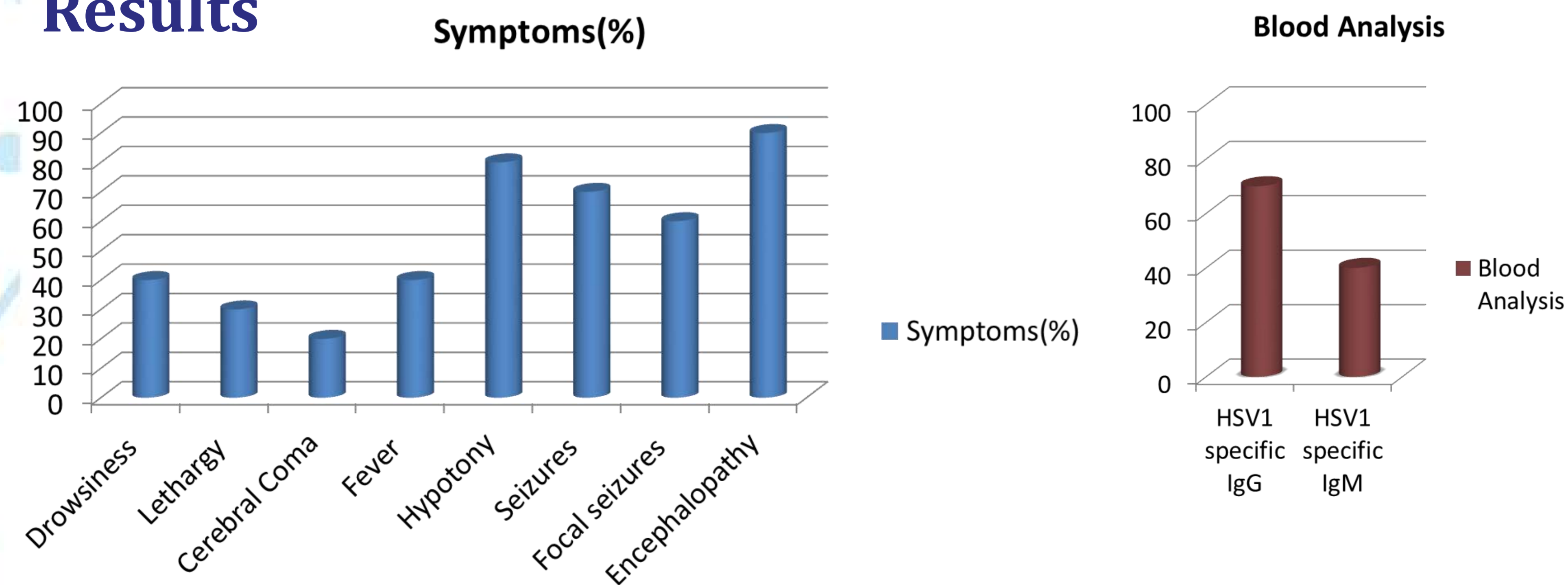


Fig.1

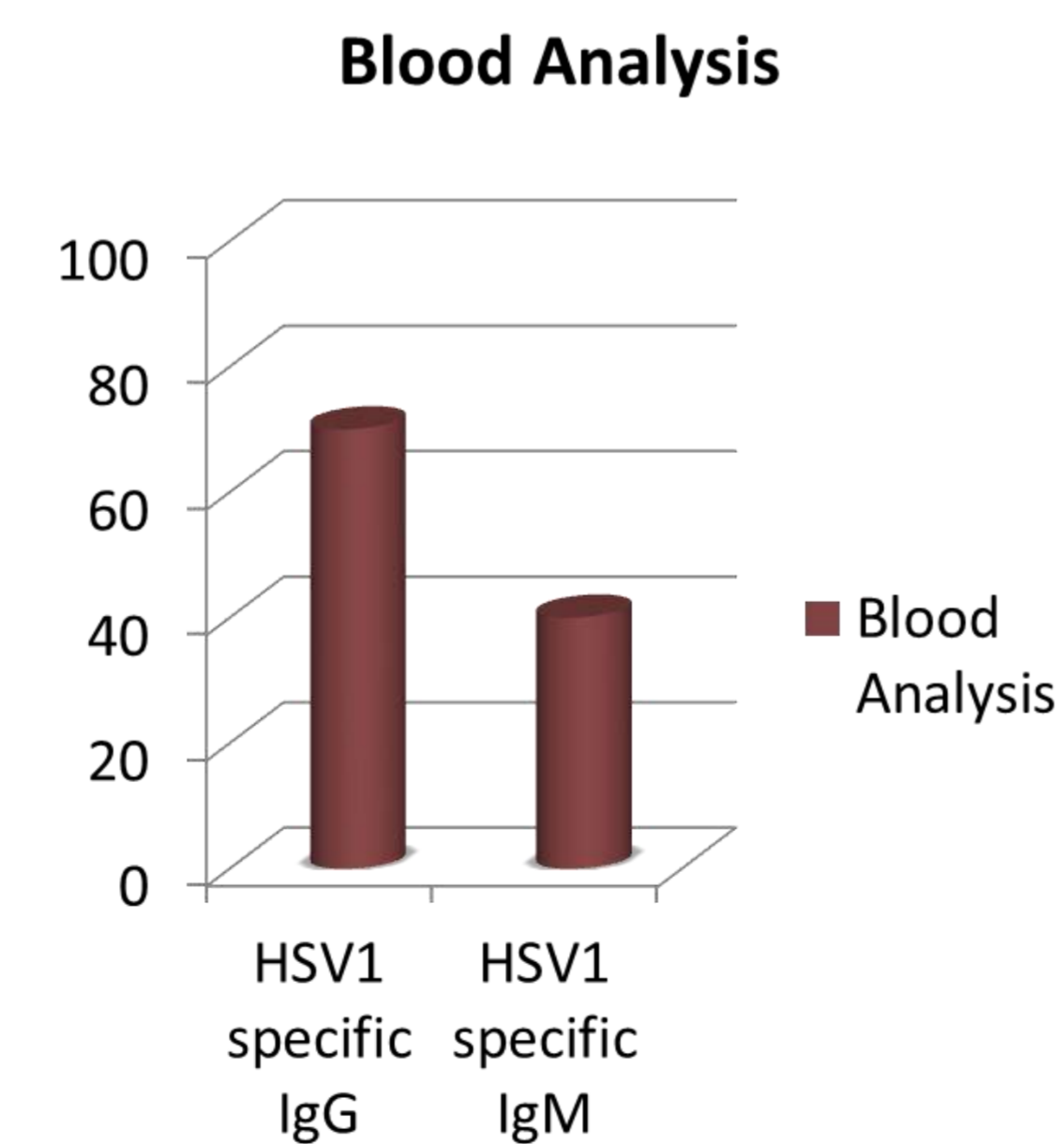


Fig.2

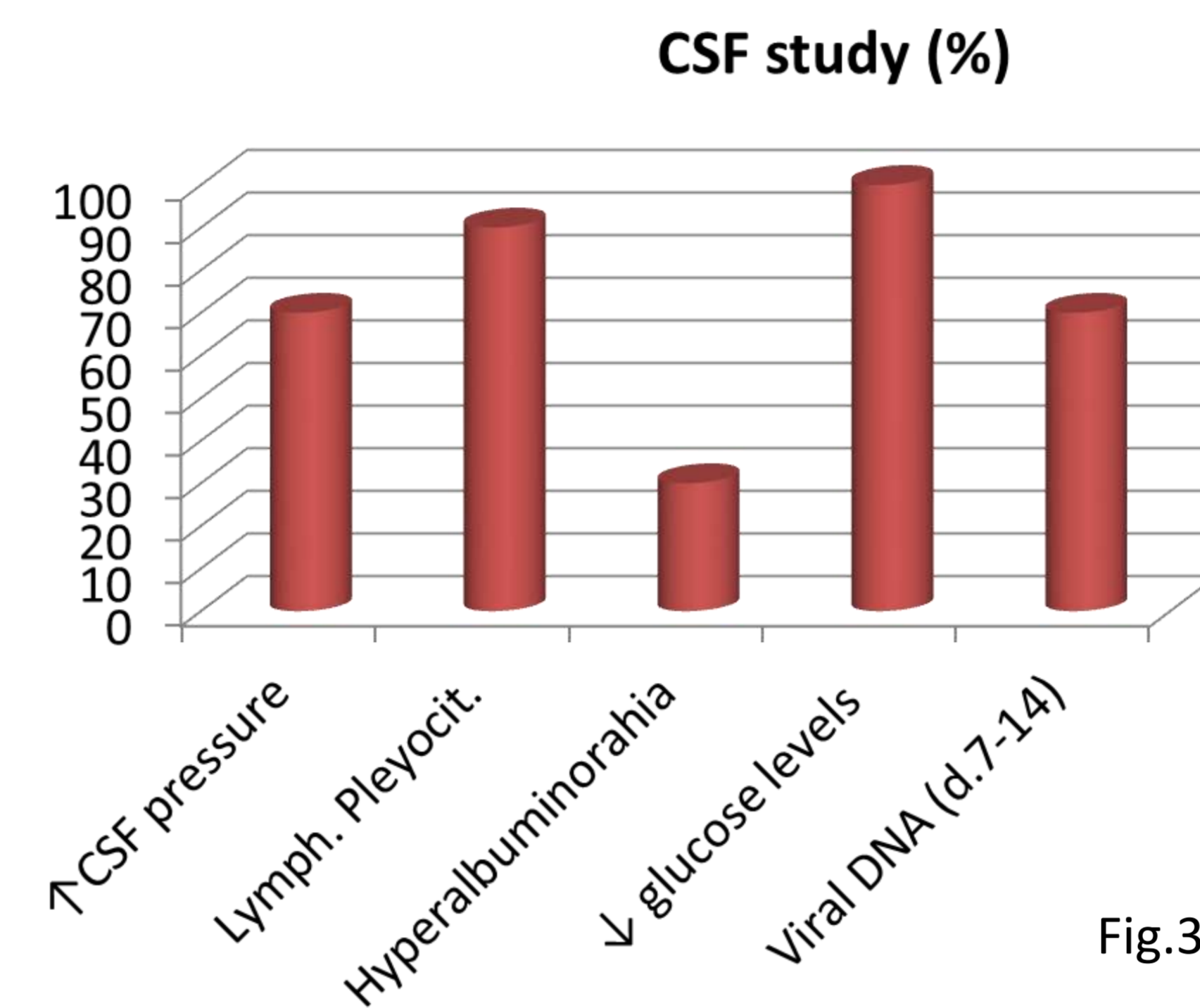


Fig.3

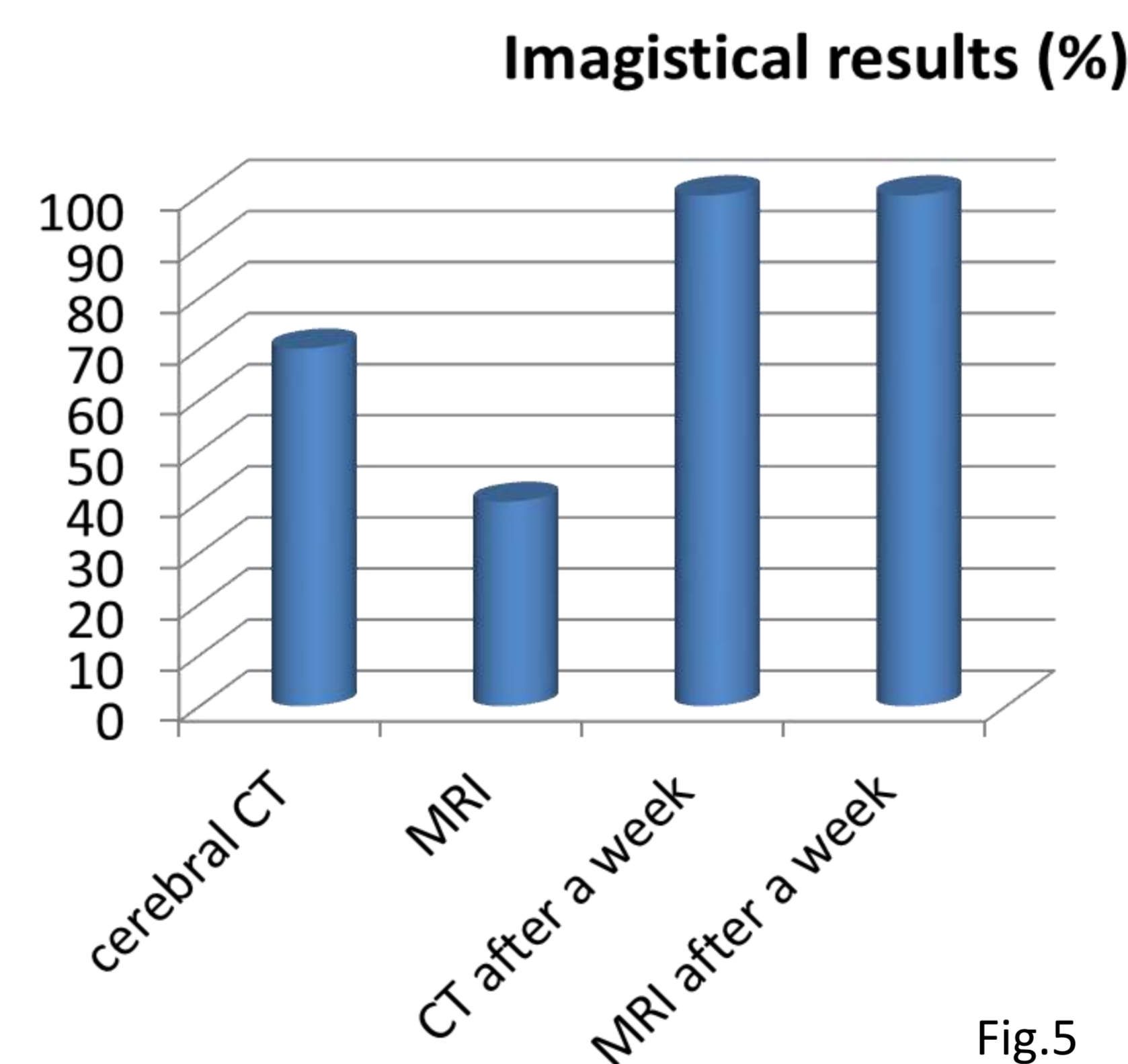


Fig.5

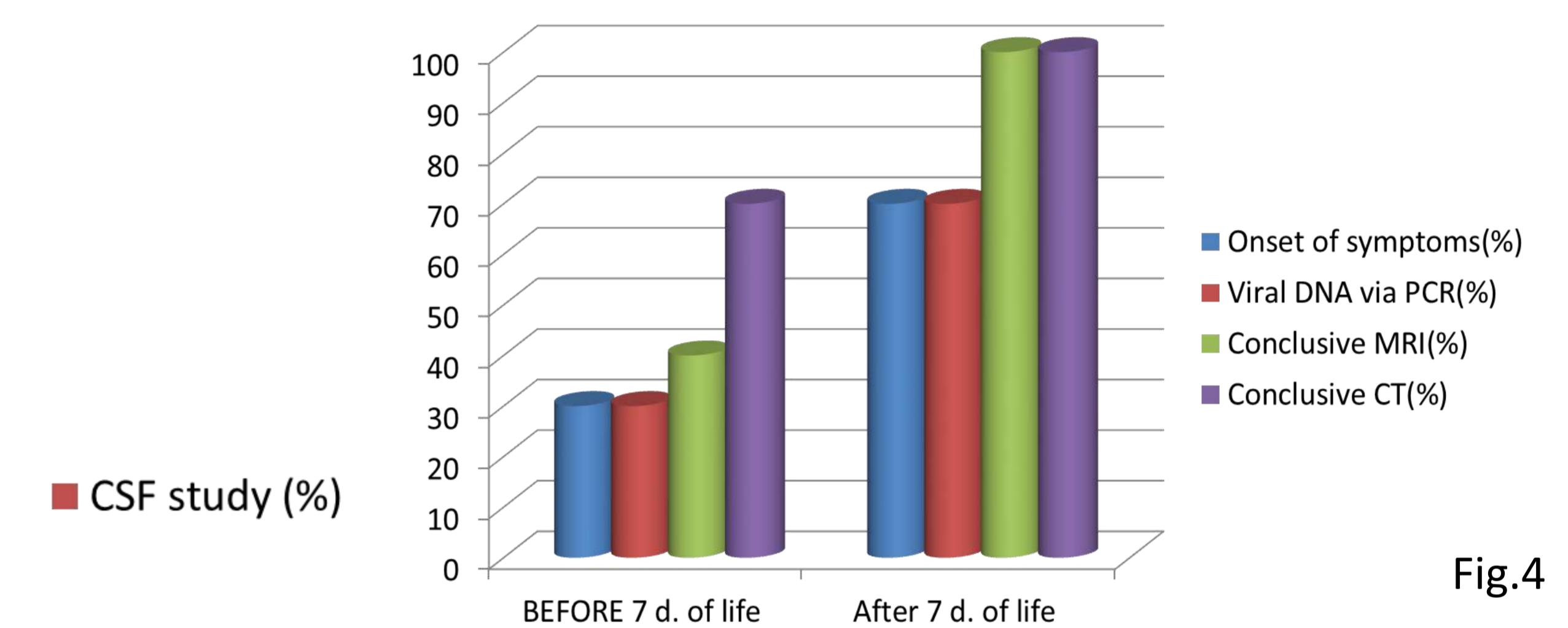


Fig.4

Besides the above shown data, EEG showed abnormal deviations in 100% of patients. The found modifications were:

- ❖ Slow diffuse activity;
- ❖ Epileptic discharges with lateralization in the temporal lobe;
- ❖ Slow wave complexes each 2-3 seconds. (fig 6.)

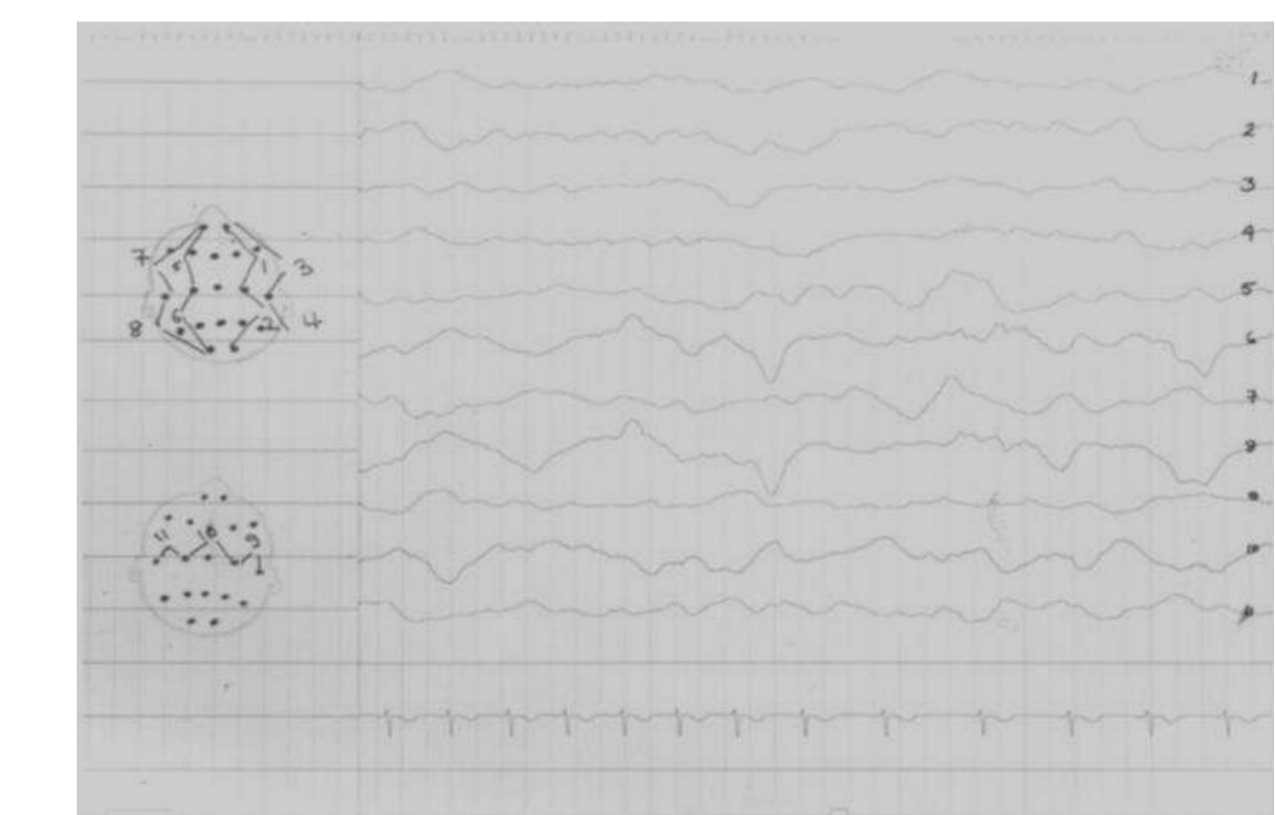


Fig.6

Through this diagrams, the most common signs in newborns are low muscular tonus , encephalopathy, low LCR glucose levels, abnormal EEG, HSV1 specific Ig G and Ig M, viral DNA in CSF via PCR, and of course a net precise picture at CT and MRI.

Conclusions

Although in the first stages HE symptoms are similar to other neuropathies, the most correct and sure results are obtained after a week of symptoms. Using these particularities, it’s easier to make a factual differential diagnosis with other cerebral pathologies, and initiating an appropriate antiviral treatment.

*HVS1-Herpes Simplex Virus type 1; HE-Herpetic Encephalitis; ELISA- enzyme-linked immunosorbent assay; Lymph. Pletocit. – Lymphocytic pleocytosis; d.7-14 – in days 7-14 of life; PCR- Polymerase Chain Reaction;