

## Discipline of Rheumatology and Nephrology KIDNEY DISEASE IN GOUT

Cornea Cornelia, Rotaru Larisa, Groppa Liliana, Russu Eugeniu, Sasu Dorian, Cazac Victor

### Introduction

The association between gout and kidney diseases has long been recognized. Kidney disease is very common in patients who have suffered from gouty arthritis for many years. Renal involvement is the most common manifestation of hyperuricemia after arthritis.

### Keywords

Gout, kidney damage nephrolithiasis

### Purpose

To study the clinical features and evolution of renal impairment in patients with gout.

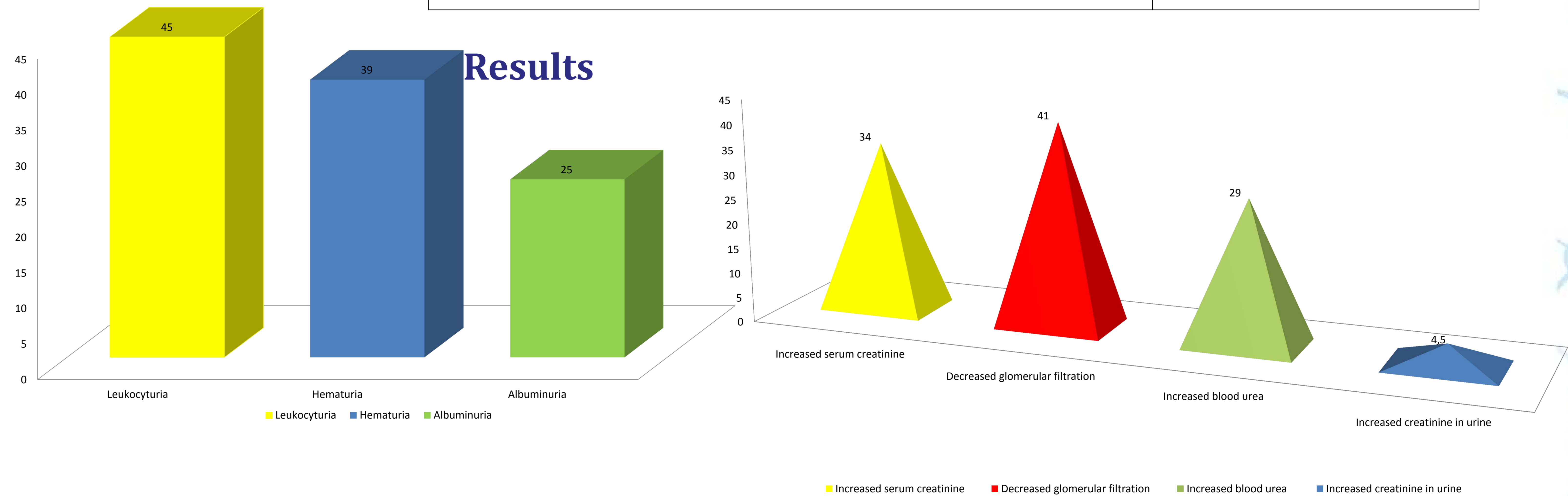
### Conclusions

1. Renal impairment occurs in the early stages of gout, in  $25.0 \pm 2.9\%$  of patients.
2. The prophylaxis of kidney disease is paramount in gout, because renal dysfunction leads to decreased excretion of uric acid, hence uric acid rises in the serum, and causes more pronounced disorders.

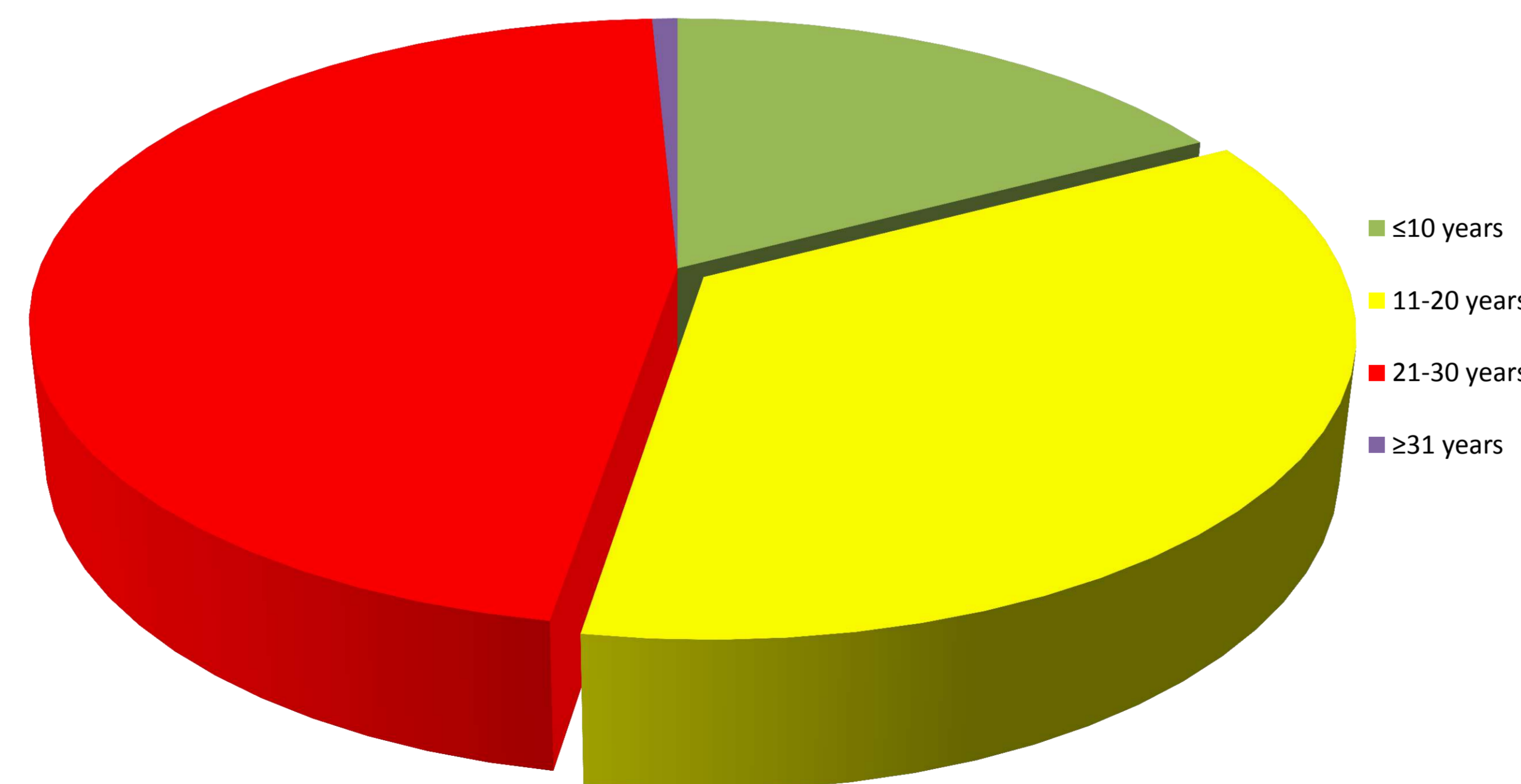
### Material and methods

The average age of the patients.	$50.64 \pm 4.98$ years.
The average duration of the disease	$15.46 \pm 1.76$ years

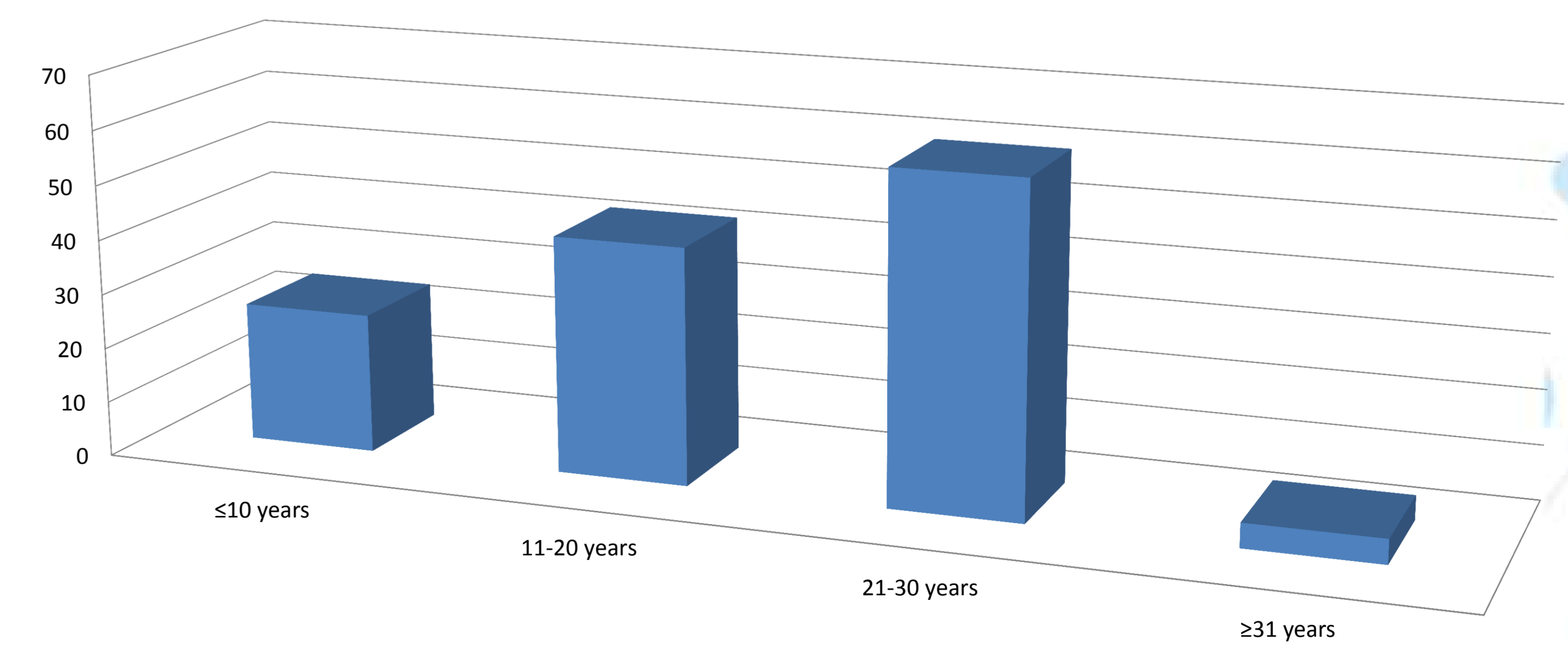
### Results



The incidence of the disease with an average duration



Uric nephrolithiasis had the following incidence depending on the duration of the gout



	≤10 years	11-20 years	21-30 years	≥31 years
Uric nephrolithiasis had the following incidence depending on the duration of the gout	25,46	43,18	60,2	4,5