

## The burden of chronic hepatitis, liver cirrhosis and liver cancer in Republic of Moldova

Angela Paraschiv, Department of Preventive Medicine, Discipline of Epidemiology, Nicolae Testemitanu State University of Medicine and Pharmacy

**Introduction.** In the Republic of Moldova, there are over 70 thousand patients with chronic hepatitis, about 10 thousand patients with liver cirrhosis and about 400 patients with liver cancer. Every year, more than 2,000 patients die as a result of liver cirrhosis and more than 400 patients die from liver cancer.

**Purpose.** Analysis of the morbidity level of chronic hepatitis, liver cirrhosis and liver cancer in the population of the Republic of Moldova, with the determination of the risk factors that have contributed to the unfavorable evolution of patients statements

**Material and methods.** Statistical forms for chronic hepatitis and liver cirrhosis reporting, including data on liver cancer in the Republic of Moldova were analyzed. In order to determine the risk factors, the patients with the mentioned pathologies were questioned and the data were processed in the Epi Info 7.2 program. A descriptive and analytical study was applied for the analysis of risk factors.

### Results.

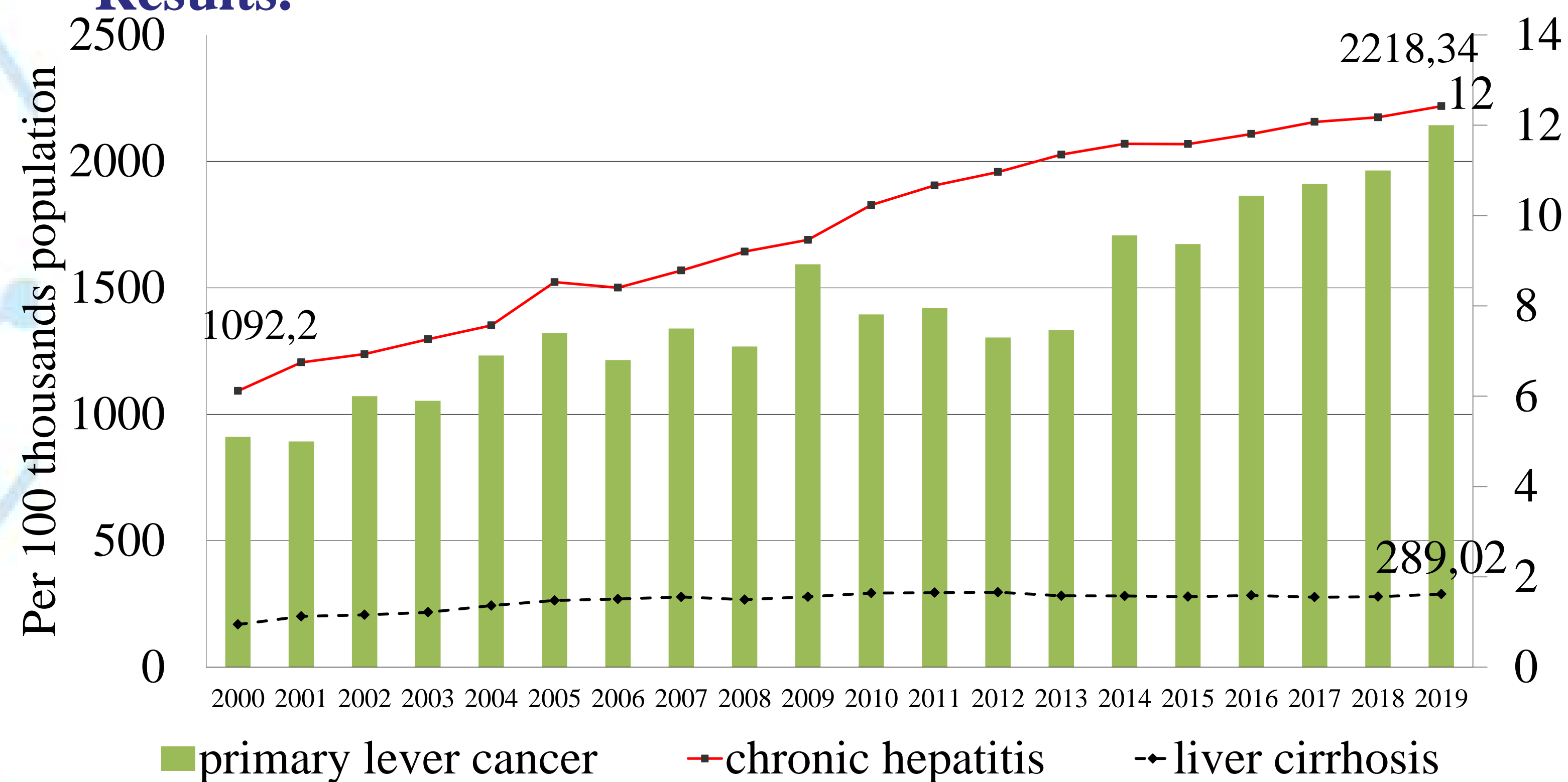


Fig. 1 Morbidity evolution of chronic hepatitis, liver cirrhosis and primary liver cancer

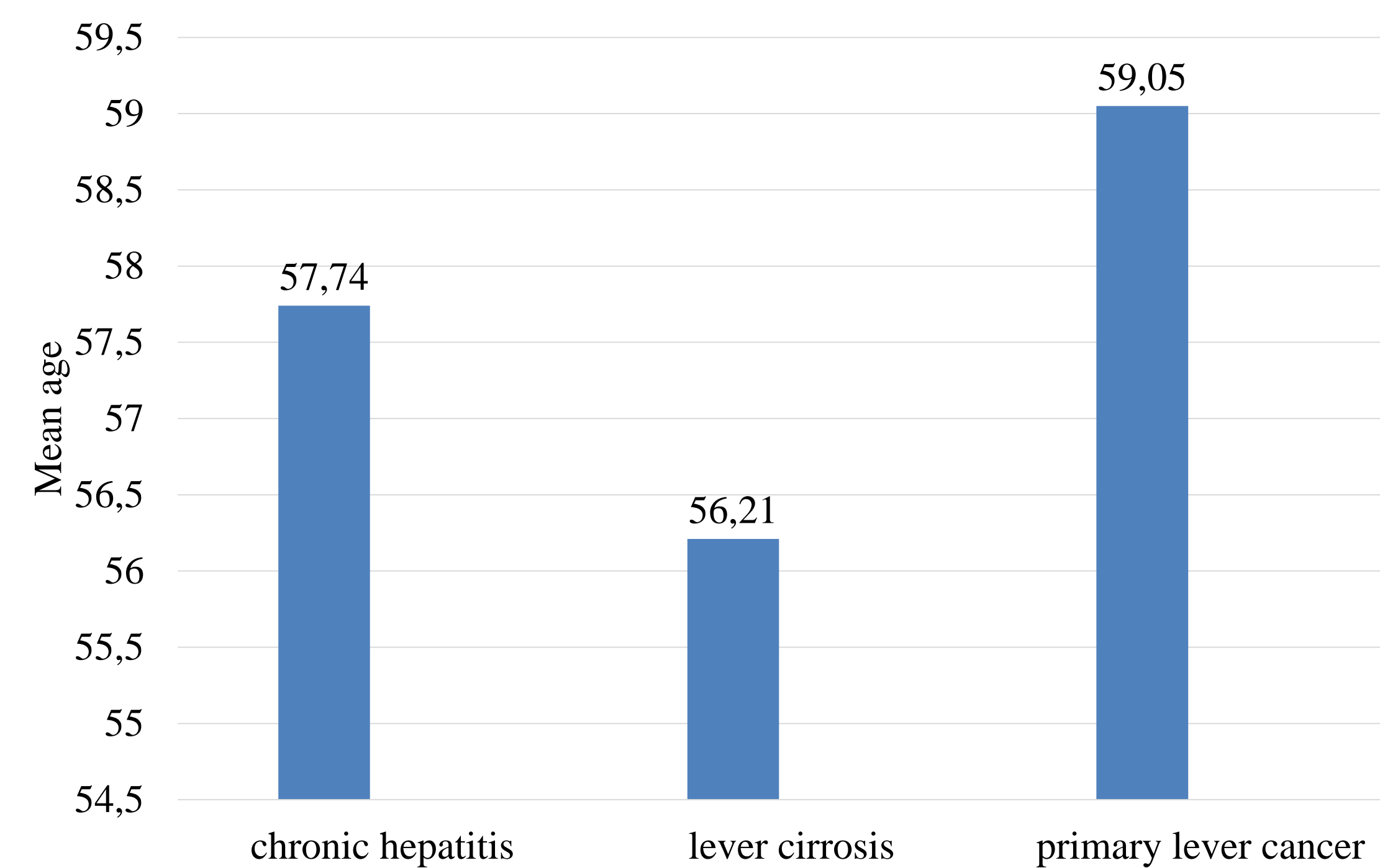


Fig.2 Mean age of patients with chronic liver pathologies

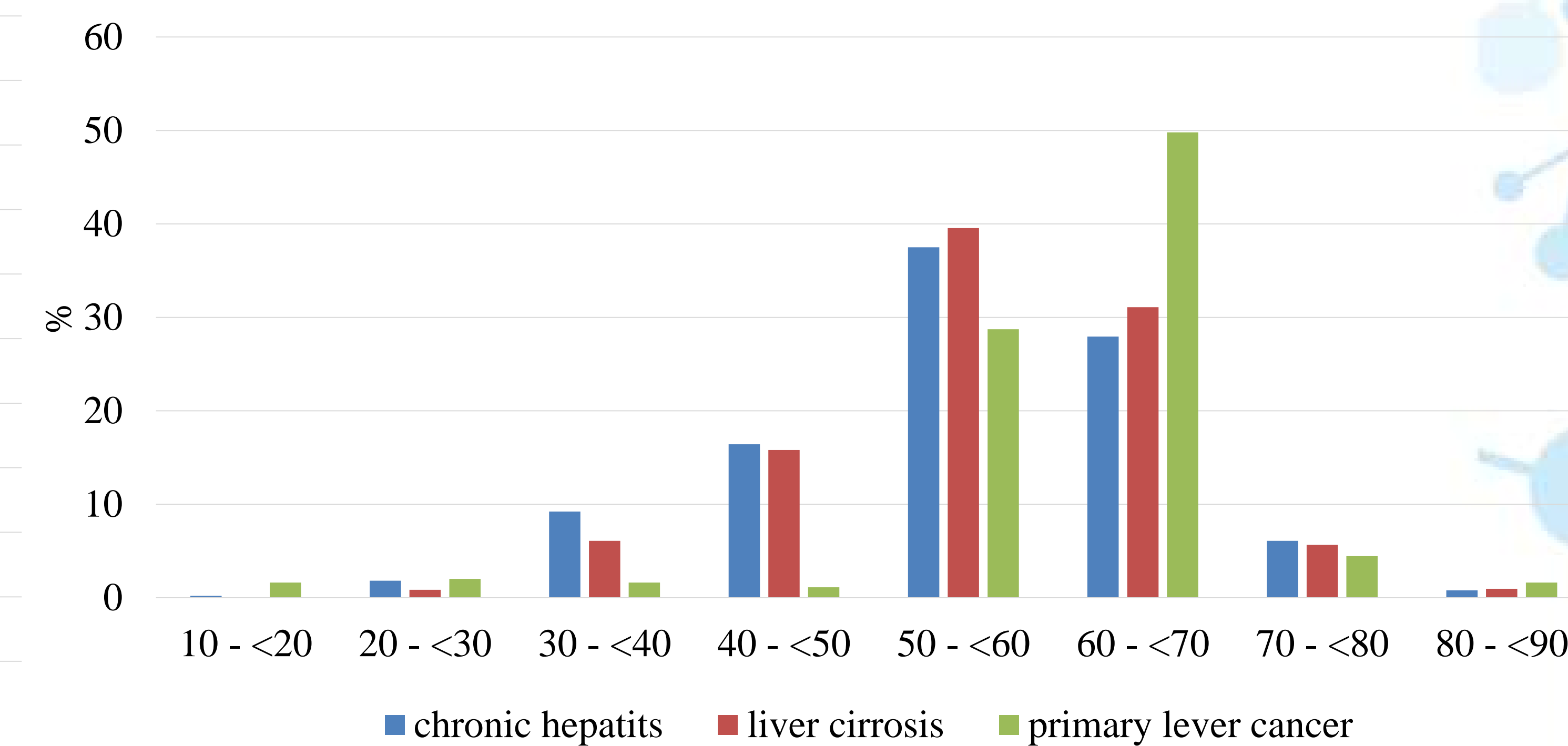
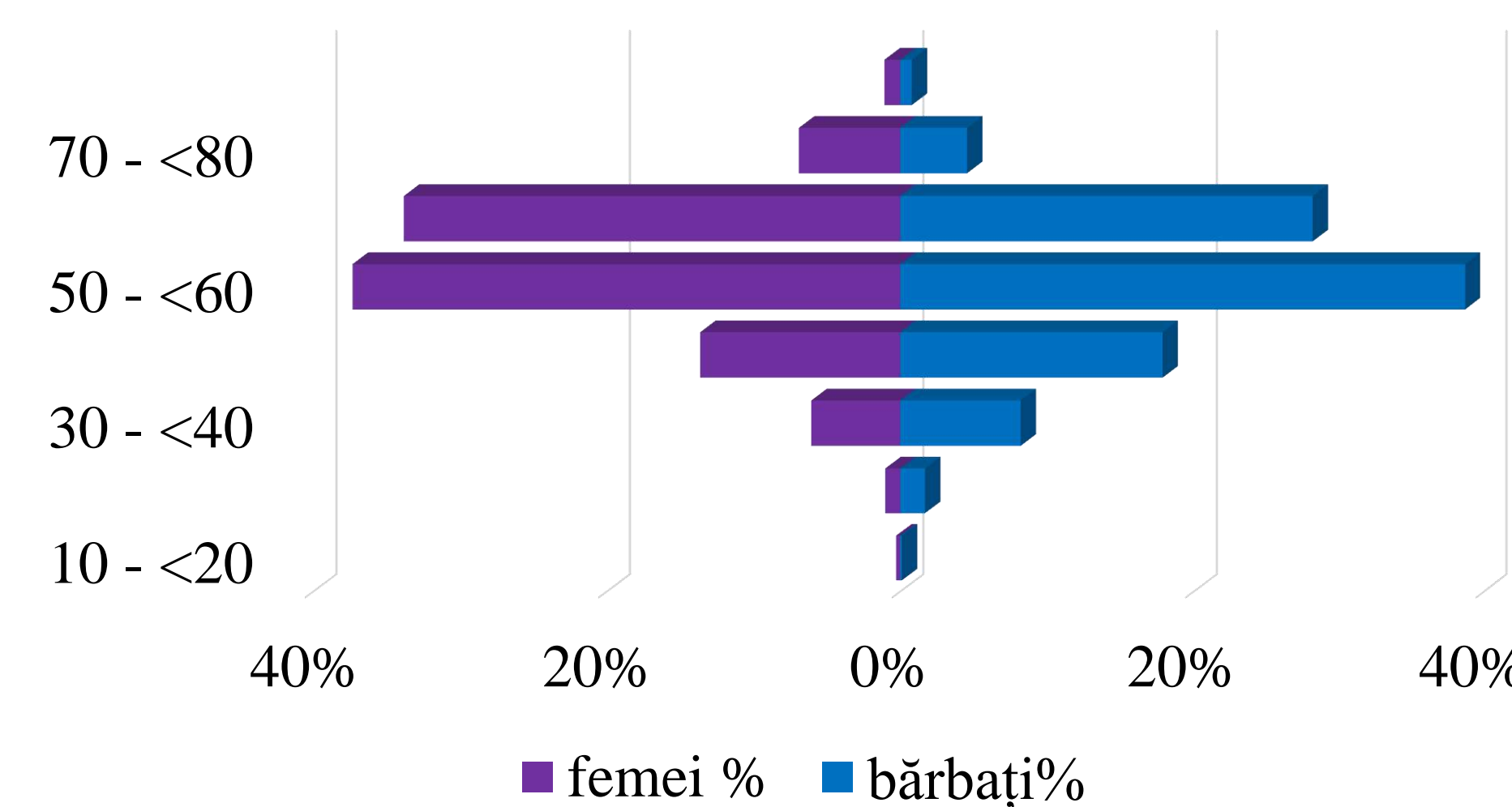


Fig. 3 Age distribution in chronic liver pathologies



Distribution of chronic pathologies by age and gender

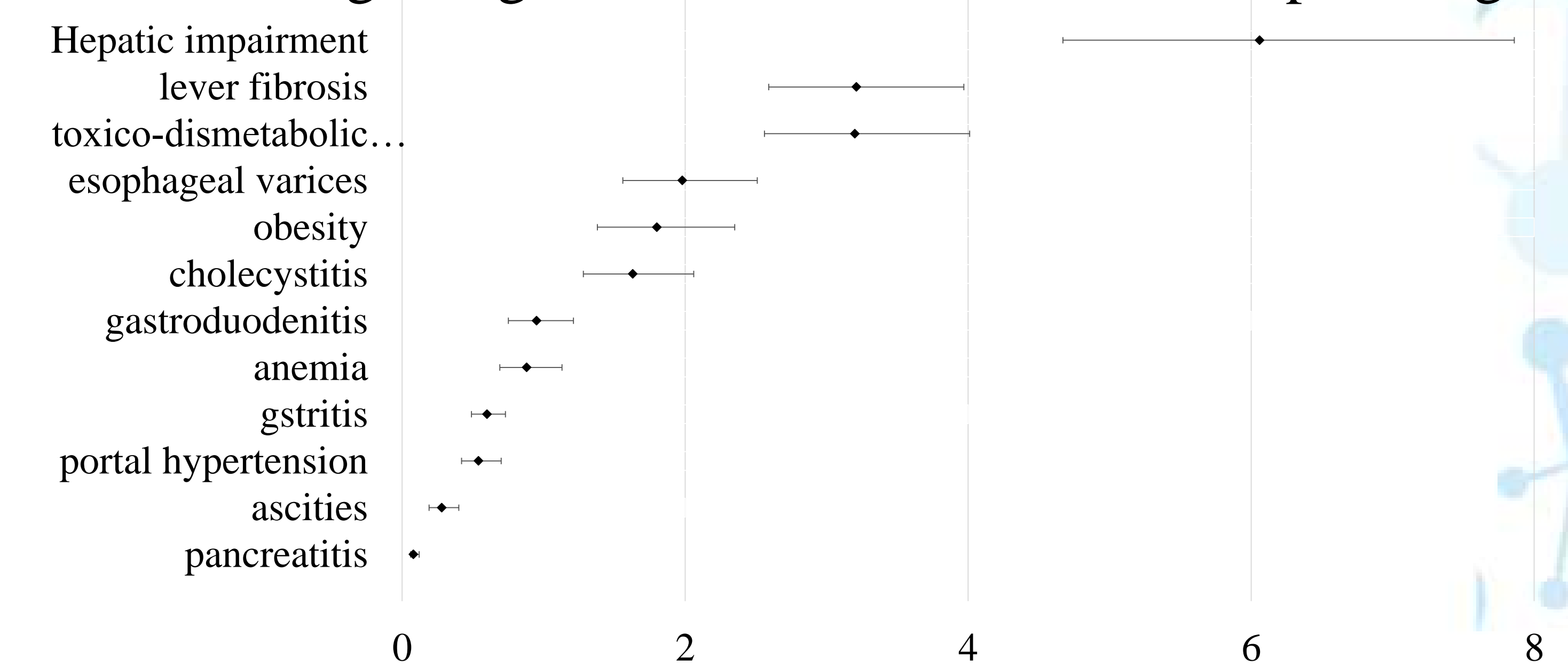


Fig. 4 Odds Ratio and Confidence Interval for liver cirrhosis by concomitant Pathologies

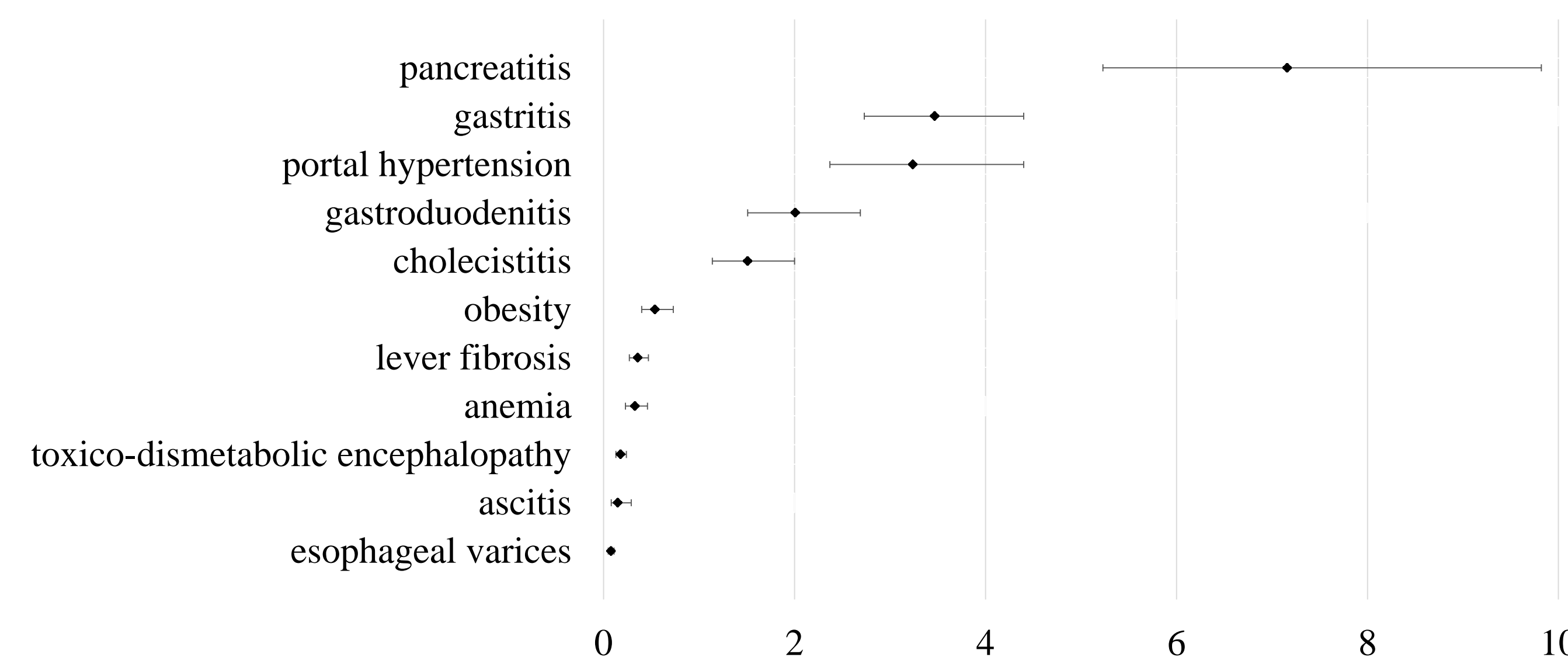


Fig.5 Odds Ratio and Confidence Interval for Chronic Hepatitis by concomitant Pathologies

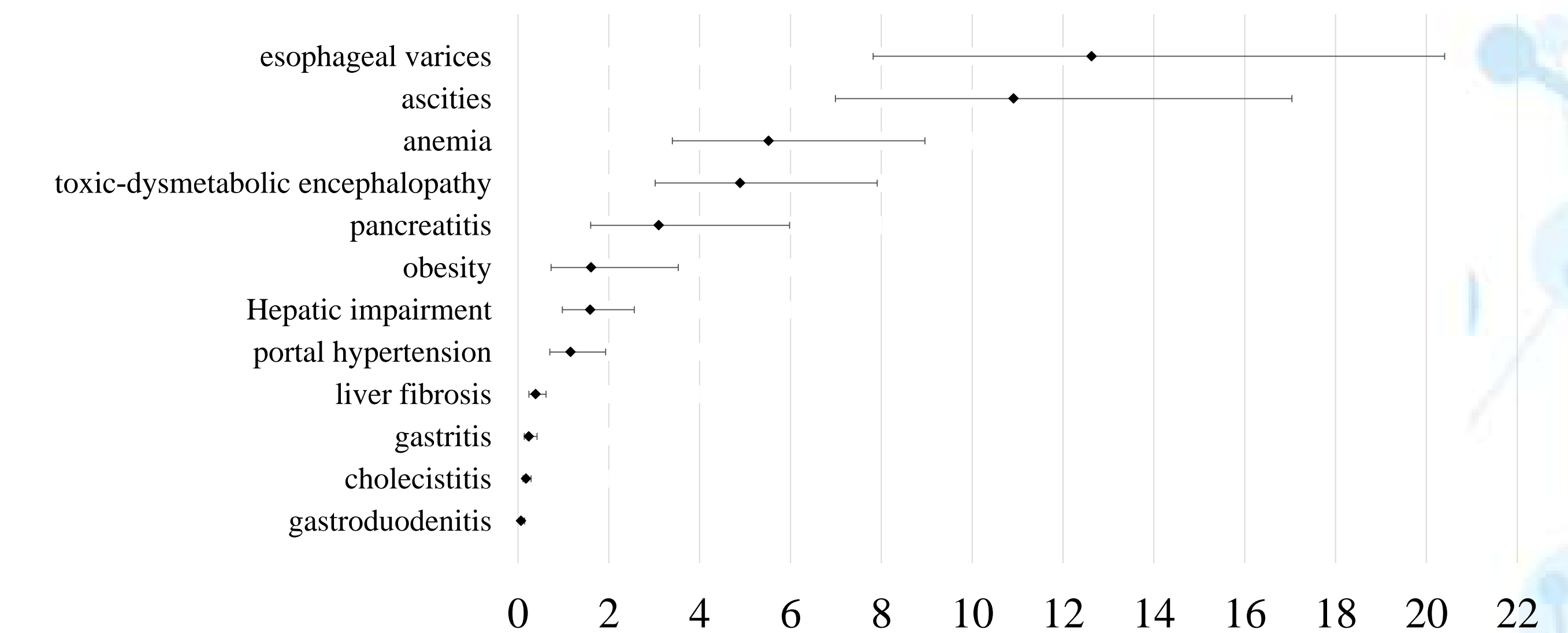


Fig.6 Odds Ratio and Confidence Interval for primary liver cancer by concomitant Pathologies

**Conclusions.** Liver pathologies are a public health problem. The morbidity is in continue increasing during last 20 years. Risk factors that contribute to the unfavorable evolution of health for chronic hepatitis are: the age, comorbidities: pancreatitis, gastritis, liver fibrosis, hepatic imparitment, esophageal varices, etc.

**Keywords:** chronic hepatitis, lever cirrhosis, liver cancer, risk factors